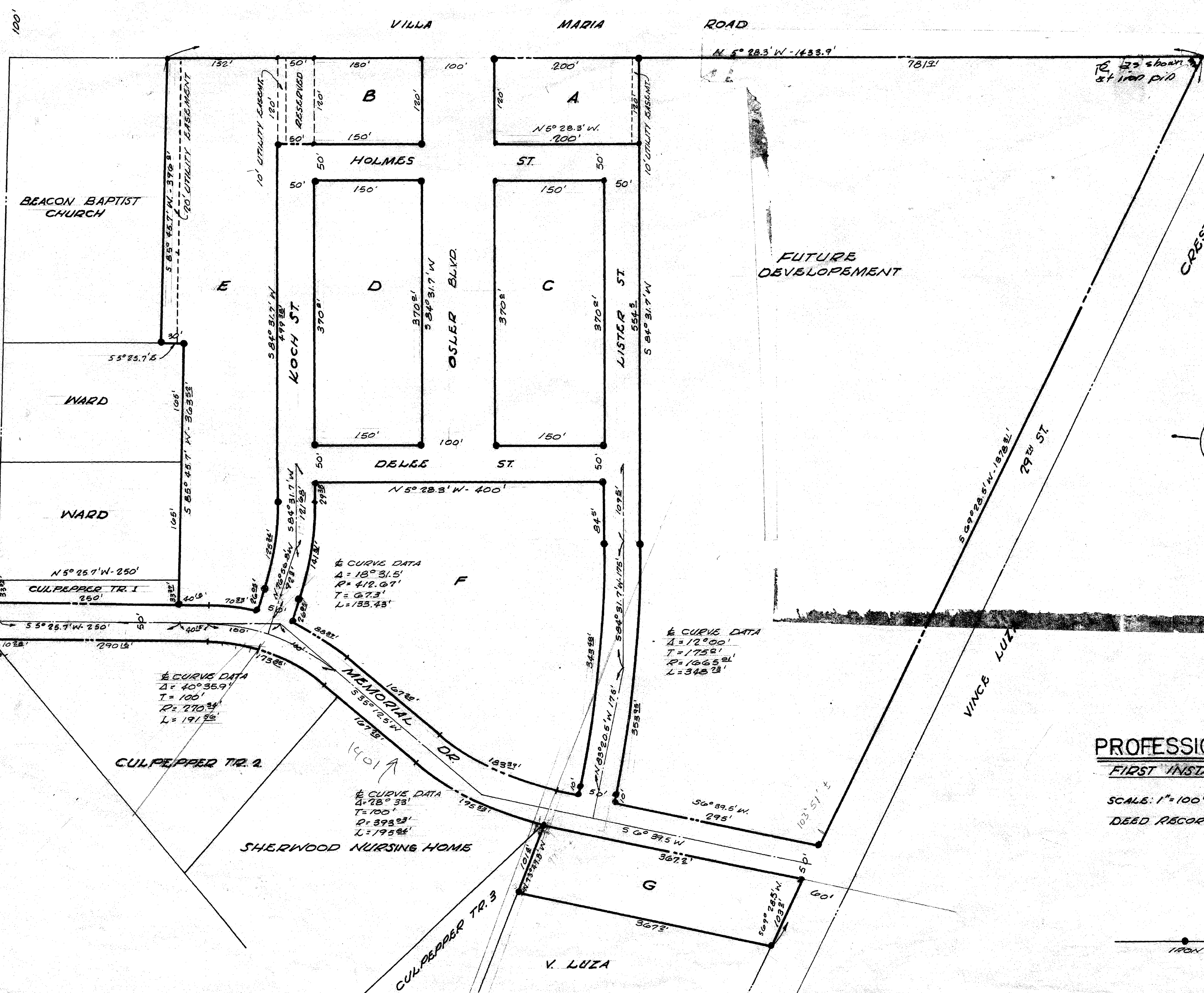


JACK LESTER



LAMAR JR. HIGH SCHOOL

BEACON BAPTIST CHURCH

WARD

WARD

CULPEPPER TR. 1

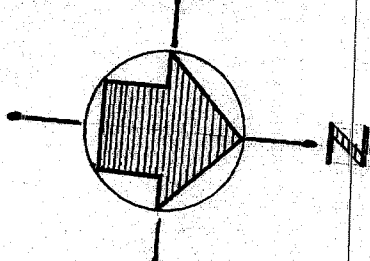
CULPEPPER TR. 2

SHERWOOD NURSING HOME

V. LUZA

FUTURE DEVELOPEMENT

CRESTVIEW



298

PROFESSIONAL COMPLEX
 FIRST INSTALLMENT BLKS A-G

SCALE: 1" = 100' 7/24/64
 DEED RECORD - VOL. 240, PG. 649

on land base
 10/1/61
 WD